

# Voter Guide for Placer County Residents



## Who can vote?

- To register in California you must:
  - be a United States citizen
  - be a resident of California
  - be at least 18 years old or older on Election Day

## But what if I have a record?

- You can vote even if you have a juvenile record.
- You also can vote if you have a criminal adult record as long as you **meet requirements here.**



## Relevant Resources:

- California-wide website** with elections and voter information.
- Get paid to be a poll worker. **Sign up here!**



## 2 Once you're registered: 2 WAYS TO VOTE

Postmarked by November 3rd, 2020

### 1. Vote-by-Mail (Preferred Option)

- Your vote-by-mail ballot must be signed (on the return envelope) and postmarked by Election Day, November 3rd, 2020.



#### 1A. Checklist before you drop off your ballot

- Place your voted ballot card(s) inside the Official Return Envelope.
- Securely seal the Official Return Envelope.
- Sign and date the back of the Official Return Envelope.



#### 1B. 3 ways to drop off your ballot:

- By mail, remember no postage is necessary.
- In person at any Vote by Mail drop box location. **Find locations here.**
- At any Vote Center in Placer County. **Find a vote center here.**

[Click here for more information on how to vote-by-mail](#)

## 1

### Register to vote online.

Deadline: October 19th, 2020



- Go to <https://registertovote.ca.gov/>
- Walk through the steps to register to vote online. Check the status of your registration there as well.
- After October 19th, you can (& must) register in-person up to Election Day.

If you can: **REGISTER & VOTE EARLY**

In California, all registered voters will automatically receive a vote-by-mail ballot at the address provided when registering.



### Don't have a permanent address?

- Or not living at the address you receive mail at?
- Find information here** about sending your ballot to a temporary address

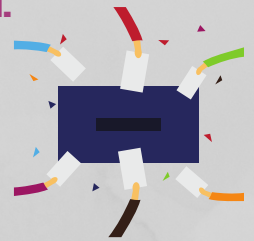


\*Voting center & polling place are used interchangeably in this document.

### 2. In-person Voting

- On Election Day, **Nov. 3rd**, voting centers will be open **from 7AM-8PM.**
- All voting centers will be available on **October 31 from 8AM-4PM & November 1st/2nd from 9AM-5PM.**
- Find a polling place near you on the Voter Info. Guide your county elections official mailed to you or **online here.**

Even if you get a ballot in the mail you can still decide to vote in-person **without the ballot you received in the mail.**



### Where to find reliable info on candidates and measures?

- Official Voter Guide** from California Secretary of State.
- Interactive voter guide** that includes arguments for and against the 12 ballot measures that will be on the CA November ballot.



It's okay to NOT vote on every single measure or candidate if you are unsure.

